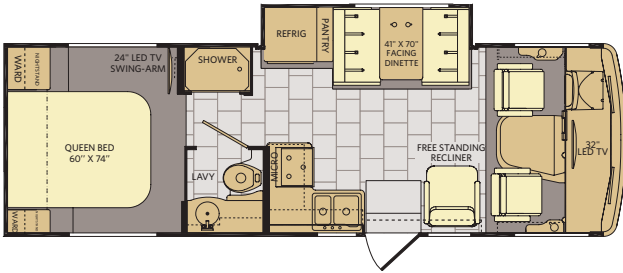


TOP FEATURES

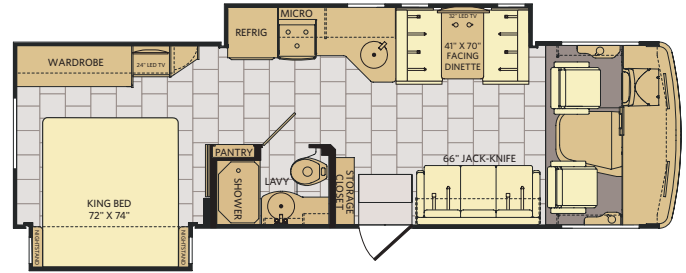
- High Gloss Cabinetry and Doors w/Hidden Hinges
- Bedroom LED TV
- High Gloss Gel Vetrolite® Ultra-Thick Fiberglass Skin (No Wood Substrate)
- Intense Halogen Projector Headlamps
- Side Swing Diesel Style Aluminum Luggage Doors
- Power Awning w/LED Light Strip

- Back-Up & Side-View Camera Package
- Exterior Entertainment Center
- Tinted Frameless Windows
- Soft-Touch Vinyl Ceiling w/Ducted Air
- Full Basement Storage

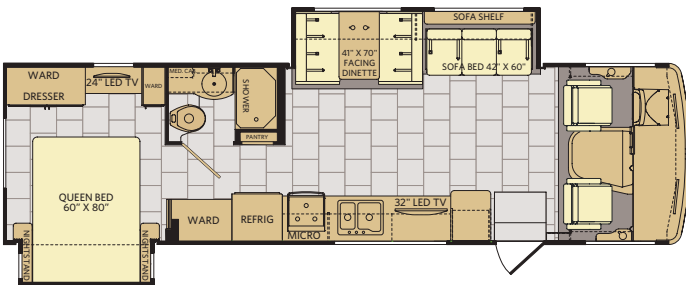
26D Options: 186, 198, 218



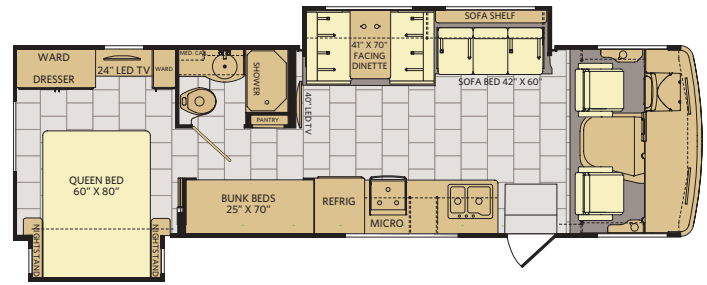
30P Options: 113, 186, 217



31A Options: 186, 217



31E Options: 097, 157, 186, 217



Available Options

OPT. 097
BUNK AREA
19\"/>

OPT. 113
3-BURNER
COOKTOP
W/OVEN

OPT. 157
DUAL
MONITORS

OPT. 186
DRIVER/PASSENGER
PEDESTAL TABLE

SOFA 69\"/>

OPT. 217
HIDE-A-LOFT DROP
DOWN QUEEN BED
60\"/>

OPT. 218
HIDE-A-LOFT
DROP DOWN
QUEEN BED
60\"/>

DÉCOR CHOICES

High Gloss
Autumn Wheat



High Gloss
Nottingham Cherry

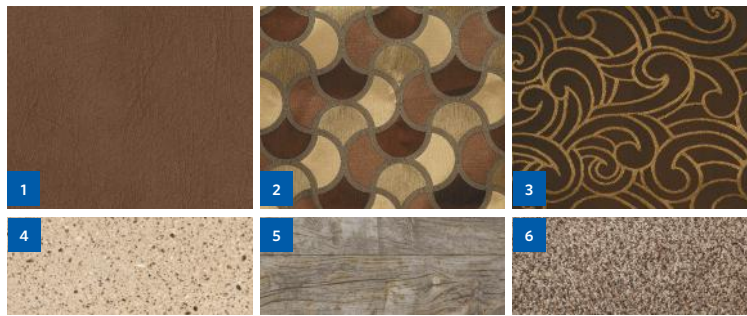


1 | Sofa 2 | Accent 3 | Bedspread 4 | Countertop 5 | Flooring 6 | Carpet

Infinity Sterling



Rum Raisin



EXTERIOR CHOICES

Radiant Ruby



Smokey Lapis



CHASSIS

MODEL	26D	30P	31A	31E
Wheelbase (inches) ⁴	158"	190"	208"	208"
GVWR (lbs) ¹	16,000	18,000	18,000	18,000
Front GAWR (lbs) ²	6,500	7,000	7,000	7,000
Rear GAWR (lbs) ²	11,000	12,000	12,000	12,000
GCWR (lbs) ³	21,000	23,000	23,000	23,000
Hitch Rating Weight (lbs) [†]	5,000	5,000	5,000	5,000
Tongue Weight (lbs) [*]	500	500	500	500
Fuel Capacity (gal)	80	80	80	80

FORD® CHASSIS

Model: Ford
Engine: 6.8L Triton V10
Transmission: Ford, 6-Speed, Automatic w/Overdrive

Alternator: 175 Amp
Torque: 460 lb.-ft. @ 3,000 RPM
Horsepower: 320 HP @ 3,900 RPM

DIMENSIONS AND CAPACITIES

MODEL	26D	30P	31A	31E
Overall Length (inches) ⁴	27' 10"	30' 11"	32' 9"	32' 9"
Overall Height (with A/C)	12'	12'	12'	12'
Overall Width (maximum) ^{5, 6}	102"	102"	102"	102"
Interior Height (maximum)	82"	82"	82"	82"
Interior Width (maximum)	96"	96"	96"	96"
Patio Awning Width	18'	14'	18'	18'
Interior Storage (cu. ft.)	120	140	134	108
Exterior Storage (cu. ft.)	85	104	156	156
Fresh Water Holding Tank (gal)	50	50	60	60
Grey Water Holding Tank (gal)	35	35	37	37
Black Water Holding Tank (gal)	35	35	37	37
Appliance Propane Tank (gal) (WC) ⁷	14	14	14	14
Water Heater Tank (gal)	6	6	6	6

Addendums

- GVWR (Gross Vehicle Weight Rating) is the maximum permissible weight of this fully loaded motorhome. The GVWR is equal to or greater than the sum of the (UVW) unloaded vehicle weight plus the (OCCC) occupant cargo-carrying capacity*.
 - GAWR (Gross Axle Weight Rating) is the maximum permissible loaded weight a specific axle is designed to carry.
 - GCWR (Gross Combined Weight Rating) is the value specified by the motorhome manufacturer as the maximum allowable loaded weight of this motorhome with its towed vehicle. Towing and braking capacities may be different. Refer to Fleetwood and chassis manufacturer's manuals for complete information.
 - Length measured from front bumper to rear bumper (excludes accessories).
 - Excludes safety equipment and awnings.
 - Motorhomes feature a body width over 96" which will restrict your access to certain roads. Before purchasing, you should research any state and/or province road laws which may affect your usage.
 - Tank manufacturer's listed water capacity (WC). Actual propane capacity is 80% of water listing as required by the safety code.
- † The chassis manufacturer recommends the installation of a supplemental brake control system to activate the brakes on the vehicle or trailer you are towing. Hitch receiver ratings expressed are maximum for the hitch receiver installed and may require the purchase of additional equipment that is dependent on the weight of the towed load. Consult with hitch receiver manufacturer for further information.

* UVW and OCCC are found on the label containing the federal certification tag in each RV.

†† The Minimum Towable Load of this vehicle is the available weight capacity, up to GCWR, when the coach is fully loaded to maximum GVWR. However, if the coach is loaded to something less than maximum GVWR, that extra available weight capacity can be added to your Towable Load. For example, if your coach is loaded to 1000lbs less than maximum GVWR, your Towable Load increases accordingly. Do not exceed the hitch rating weight, GVWR or GCWR.

IMPORTANT—PLEASE READ

Product information, photography and illustrations included in this publication were as accurate as possible at the time of printing. For further product information and changes, please visit our website at www.fleetwoodrv.com or contact your local Fleetwood RV dealer. Prices, materials, design and specifications are subject to change without notice. All weights, fuel, liquid capacities and dimensions are approximate. Fleetwood RV has designed its recreational vehicles to provide a variety of uses for customers. Each vehicle features optimal seating, sleeping, storage and fluid capacities. The user is responsible for selecting the proper combination of loads (i.e., occupants, equipment, fluids, cargo, etc.) to ensure that the vehicle's capacities are not exceeded.

CONTACT US

To locate a dealer near you, visit our website at www.fleetwoodrv.com or call 1-800-322-8216. We can also be contacted at Fleetwood RV Customer Relations, P.O. Box 1007, Decatur, IN 46733.

** All 2017 REV Recreation Group motorhomes include a limited one-year/15,000-mile coach warranty and three-year/45,000-mile structural warranty, whichever occurs first, and is fully transferable for the first 12 months.



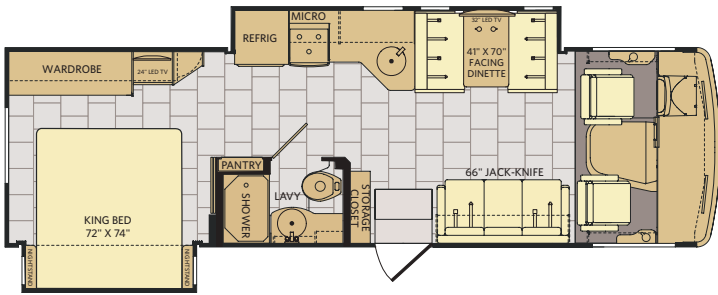
TOP FEATURES

- High Gloss Cabinetry and Doors w/Hidden Hinges
- Bedroom LED TV
- High Gloss Gel Vetrolite® Ultra-Thick Fiberglass Skin (No Wood Substrate)
- Intense Halogen Projector Headlamps
- Side Swing Diesel Style Aluminum Luggage Doors

- Power Awning w/LED Light Strip
- Back-Up & Side-View Camera Package
- Exterior Entertainment Center
- Tinted Frameless Windows
- Soft-Touch Vinyl Ceiling w/Ducted Air
- Full Basement Storage

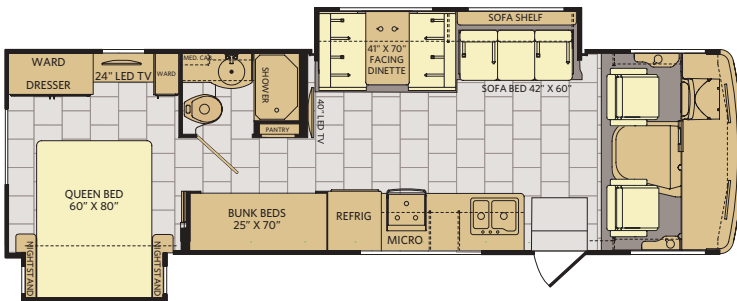
30U

Options: 113, 144, 186, 217



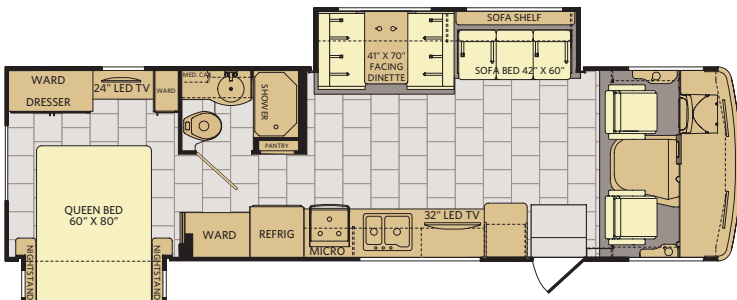
31B

Options: 097, 144, 157, 186, 217



31W

Options: 144, 186, 217



LXE PACKAGE

- Living Area Solid Surface Tops
- Tile Backsplashes
- Legless Awning w/LED Light Strip
- Optional Residential Refrigerator
- Upgraded REV Control Ryde™ and Handling System
- Auto Gen Start
- 1200W Inverter
- Optional Full Body Paint
- High Gloss Hardwood Ceiling Feature

Available Options



OPT. 097
BUNK AREA
19\"/>



OPT. 113
3-BURNER
COOKTOP
W/OVEN



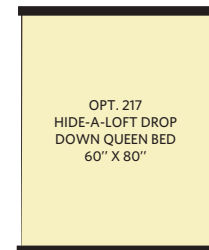
OPT. 144
RESIDENTIAL



OPT. 157
DUAL
MONITORS



OPT. 186
DRIVER/PASSENGER
PEDESTAL TABLE



OPT. 217
HIDE-A-LOFT DROP
DOWN QUEEN BED
60\"/>

DÉCOR CHOICES

High Gloss
Autumn Wheat

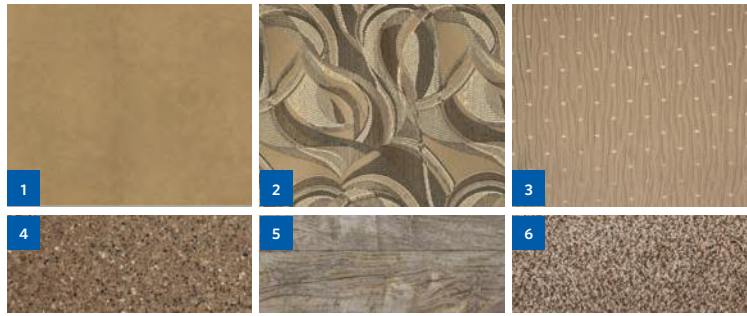


High Gloss
Nottingham Cherry

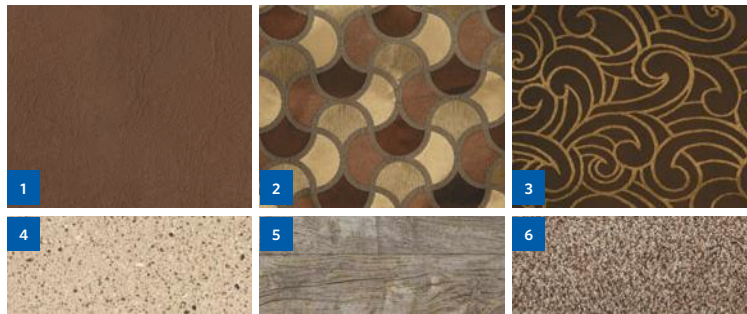


1 | Sofa 2 | Accent 3 | Bedspread 4 | Countertop 5 | Flooring 6 | Carpet

Infinity Sterling



Rum Raisin



EXTERIOR CHOICES

Radiant Ruby



Smokey Lapis



Ebony OPT. 506 Full Body Paint



Sunset OPT. 507 Full Body Paint



CHASSIS

MODEL	30U	31B	31W
Wheelbase (inches) ⁴	190"	208"	208"
GVWR (lbs) ¹	18,000	18,000	18,000
Front GAWR (lbs) ²	7,000	7,000	7,000
Rear GAWR (lbs) ²	12,000	12,000	12,000
GCWR (lbs) ³	23,000	23,000	23,000
Hitch Rating Weight (lbs) [†]	5,000	5,000	5,000
Tongue Weight (lbs) [*]	500	500	500
Fuel Capacity (gal)	80	80	80

FORD® CHASSIS

Model: Ford
Engine: 6.8L Triton V10
Transmission: Ford, 6-Speed, Automatic w/Overdrive

Alternator: 175 Amp
Torque: 460 lb.-ft. @ 3,000 RPM
Horsepower: 320 HP @ 3,900 RPM

DIMENSIONS AND CAPACITIES

MODEL	30U	31B	31W
Overall Length (inches) ⁴	30' 11"	32' 9"	32' 9"
Overall Height (with A/C)	12'	12'	12'
Overall Width (maximum) ^{5, 6}	102"	102"	102"
Interior Height (maximum)	82"	82"	82"
Interior Width (maximum)	96"	96"	96"
Patio Awning Width	14'	18'	18'
Interior Storage (cu. ft.)	140	108	134
Exterior Storage (cu. ft.)	104	156	156
Fresh Water Holding Tank (gal)	50	60	60
Grey Water Holding Tank (gal)	35	37	37
Black Water Holding Tank (gal)	35	37	37
Appliance Propane Tank (gal) (WC) ⁷	14	14	14
Water Heater Tank (gal)	6	6	6

LaMESA RECREATION VAN
LaMesaRV.com
800-496-8778

Addendums

- GVWR (Gross Vehicle Weight Rating) is the maximum permissible weight of this fully loaded motorhome. The GVWR is equal to or greater than the sum of the (UVW) unloaded vehicle weight plus the (OCCC) occupant cargo-carrying capacity*.
 - GAWR (Gross Axle Weight Rating) is the maximum permissible loaded weight a specific axle is designed to carry.
 - GCWR (Gross Combined Weight Rating) is the value specified by the motorhome manufacturer as the maximum allowable loaded weight of this motorhome with its towed vehicle. Towing and braking capacities may be different. Refer to Fleetwood and chassis manufacturer's manuals for complete information.
 - Length measured from front bumper to rear bumper (excludes accessories).
 - Excludes safety equipment and awnings.
 - Motorhomes feature a body width over 96" which will restrict your access to certain roads. Before purchasing, you should research any state and/or province road laws which may affect your usage.
 - Tank manufacturer's listed water capacity (WC). Actual propane capacity is 80% of water listing as required by the safety code.
- † The chassis manufacturer recommends the installation of a supplemental brake control system to activate the brakes on the vehicle or trailer you are towing. Hitch receiver ratings expressed are maximum for the hitch receiver installed and may require the purchase of additional equipment that is dependent on the weight of the towed load. Consult with hitch receiver manufacturer for further information.

* UVW and OCCC are found on the label containing the federal certification tag in each RV.

†† The Minimum Towable Load of this vehicle is the available weight capacity, up to GCWR, when the coach is fully loaded to maximum GVWR. However, if the coach is loaded to something less than maximum GVWR, that extra available weight capacity can be added to your Towable Load. For example, if your coach is loaded to 1000lbs less than maximum GVWR, your Towable Load increases accordingly. Do not exceed the hitch rating weight, GVWR or GCWR.

IMPORTANT—PLEASE READ

Product information, photography and illustrations included in this publication were as accurate as possible at the time of printing. For further product information and changes, please visit our website at www.fleetwoodrv.com or contact your local Fleetwood RV dealer. Prices, materials, design and specifications are subject to change without notice. All weights, fuel, liquid capacities and dimensions are approximate. Fleetwood RV has designed its recreational vehicles to provide a variety of uses for customers. Each vehicle features optimal seating, sleeping, storage and fluid capacities. The user is responsible for selecting the proper combination of loads (i.e., occupants, equipment, fluids, cargo, etc.) to ensure that the vehicle's capacities are not exceeded.

CONTACT US

To locate a dealer near you, visit our website at www.fleetwoodrv.com or call 1-800-322-8216. We can also be contacted at Fleetwood RV Customer Relations, P.O. Box 1007, Decatur, IN 46733.

** All 2017 REV Recreation Group motorhomes include a limited one-year/15,000-mile coach warranty and three-year/45,000-mile structural warranty, whichever occurs first, and is fully transferable for the first 12 months.

©2016 REV Group Inc. Printed in USA. Inventory Control Number FLR17F1, 08/16. Model Year 2017, First Edition.